



FutureSkillsTM

EXCELLENCE
25
YEARS GOING
STRONG

International Prospectus 2026

Auckland,
New Zealand



Contents



Welcome	02
Why study with us?	03
Programmes	05
Business	07
Construction	12
Information Technology	14
Success stories	17
Studying in New Zealand	20
Our campuses	22
Student services	24

Get in touch

0800 550 410
+64 9 263 0302
international@futureskills.co.nz
www.futureskills.co.nz

This programme guide is for international students only.
If you are a domestic student who would like more
information, please contact us by email at
info@futureskills.co.nz or phone us on 09 309 0301.

Welcome to 25 years of Future Skills



“If you want a career you can really be proud of, you’ve come to the right place. At Future Skills, we specialise in getting our students trained and employed in today’s booming industries.”

Sam Alavi, Group CEO

Welcome to Future Skills, a leading Category 1 private education provider in Auckland, registered with the New Zealand Qualifications Authority. Founded by Group CEO Sam Alavi in South Auckland in 2000, Future Skills opened its doors the following year.

We are now proud to celebrate 25 years of empowering learners through education. Since our beginnings in South Auckland, Future Skills has grown to four campuses in Manukau, Royal Oak, Takapuna and Auckland City - home to our international campus. Today, our students come from across New Zealand and the world.

Future Skills is a trusted training provider offering future-focused programmes in industries facing skill shortages. Our team is driven to improve the quality of people’s lives through education. Our programmes help people of all ages take the next step to advance their education and land their dream job.

We now offer more than 20 programmes and are proud to support over one thousand students. Our strong industry connections include more than 150 partners who support work placements, internships and employment outcomes.

Our students thrive in the institute’s warm and encouraging classrooms, guided by passionate, motivated lecturers. Our work placements connect learners to their chosen industry, often leading to permanent employment.

Dedicated staff work diligently to deliver top-quality education and to develop students into high-performing graduates. Your success is our success. We look forward to welcoming you.



Why study with us?

We're a Category 1 provider, and our systems, processes and campuses are all purpose-designed to help make our students shine. Our qualifications are all NZQA recognised. We believe in growing confident, capable people who go on to contribute to their communities.

For unique Auckland campuses

Category One Provider
(NQA accredited)

Industry-relevant programmes

Exceptional student support



Programmes

Equipping you with the knowledge and hands-on experience needed to thrive in booming industries. Learn current industry best practices and open up global career opportunities, readying you to make a significant impact in your field.

Business	<p>Bachelor of Applied Management (Level 7)</p> <hr/> <p>Postgraduate Diploma in Applied Management (Business Management) (Level 8)</p> <hr/> <p>Postgraduate Diploma in Applied Management (Business Information Systems) (Level 8)</p> <hr/> <p>Master of Applied Management (Business Management) (Level 9)</p> <hr/> <p>Master of Applied Management (Business Information Systems) (Level 9)</p> <hr/>
Construction	<p>New Zealand Diploma in Construction (Quantity Surveying) (Level 6)</p> <hr/> <p>Bachelor of Construction (Quantity Surveying) (Level 7)</p> <hr/>
Information Technology	<p>Postgraduate Diploma in AI Integrated IT Solutions (Level 8)</p> <hr/> <p>Master of AI Integrated IT Solutions (Level 9)</p> <hr/>

International fees table

Programme	Level	Location	Duration	Intake	IELTS	Normal fee	Fee after Scholarship
Business							
Bachelor of Applied Management (Level 7)	7	AIC	3 years	February, April, July, October	6	\$23,900 (per year)	\$19,400 (per year)
Postgraduate Diploma in Applied Management (Business Management) (Level 8)	8	AIC	1 year	February, April, July, October	6.5	\$27,000	\$23,500
Postgraduate Diploma in Applied Management (Business Information Systems) (Level 8)	8	AIC	1 year	February, April, July, October	6.5	\$27,000	\$23,500
Master of Applied Management (Business Management) (Level 9)	9	AIC	18 months	February, April, July, October	6.5	\$40,500	\$34,700
Master of Applied Management (Business Information Systems) (Level 9)	9	AIC	18 months	February, April, July, October	6.5	\$40,500	\$34,700
Construction							
New Zealand Diploma in Construction (Quantity Surveying) (Level 6)	6	AIC	2 years	February, April, July, October	6	\$24,890 (per year)	\$19,980 (per year)
Bachelor of Construction (Quantity Surveying) (Level 7)	7	AIC	3 years	February, April, July, October	6	\$24,890 (per year)	\$19,980 (per year)
Information Technology							
Postgraduate Diploma in AI Integrated IT Solutions (Level 8)	8	AIC	1 year	February, April, July, October	6.5	\$27,000	\$23,500
Master of AI Integrated IT Solutions (Level 9)	9	AIC	18 months	February, April, July, October	6.5	\$40,500	\$32,000

Bachelor of Applied Management

Gain a business degree based in real-world knowledge. As organisations are constantly changing, real-life learning is more relevant than ever.

This programme has industry experiences at its centre with case studies and workplace-based or focused assignments. The practical learning doesn't stop there as you'll also complete an internship during your third year. This internship will place you within a real-world business where you'll need to complete a research project as part of your time with the organisation. [Learn more on our website.](#)



Course Summary

Level	Level 7
International Fees	\$23,900 per year Fee after scholarship: \$19,400 per year
Duration	3 years full time
Credits	360 credits
Campus	Auckland Central (Queen St)
Who can apply	International students, over 18 years of age
Next intake	February, April, July and October

Highlights

Internships available, complete a project within an organisation

Interactive classes & practical courses

Career pathways as a Project Manager, Team Leader, Marketer, Marketing Assistant, or Human Resources Assistant.

Entry Overview

If you are under 20, you must have:

- NCEA Level 3
- 14 credits at Level 3 in each of three NZQA approved university entrance subjects.
- 10 Literacy credits at Level 2 or above, made up of: 5 credits in reading and 5 credits in writing.
- 10 Numeracy credits at Level 1 or above, made up of: specified achievement standards available through a range of subjects OR package of three numeracy unit standards (26623, 26626, 26627- all three required).

If you are over 20, you must supply evidence of industry experience and/or alternative qualifications such as the New Zealand Diploma in Business. International students will be individually assessed to ensure they meet degree-level entry requirements. [Click here](#) for equivalent academic entry requirements by country.

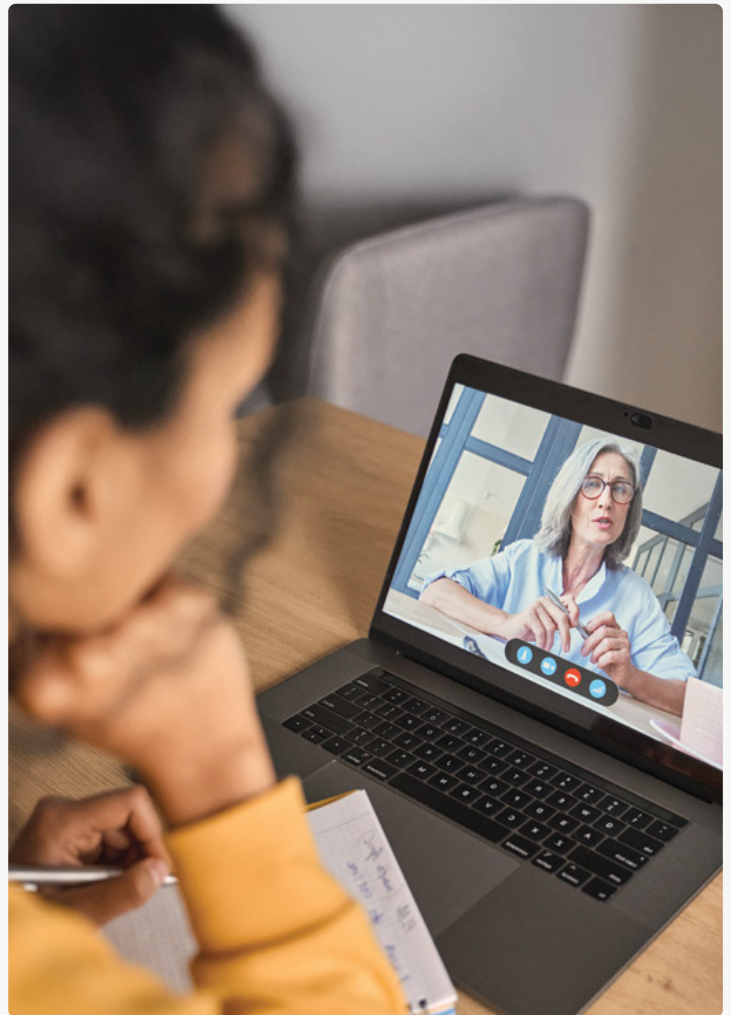
If English is not your first language, you must provide:

- New Zealand University Entrance OR
- Overall Academic IELTS 6.0 with no individual band score lower than 5.5 (achieved in one test completed in the last two years), OR
- Acceptable alternative evidence of the required IELTS ([see here](#) for NZQA proficiency table and a list of recognised proficiency tests).

Postgraduate Diploma in Applied Management (Business Management)

Management occupations are projected to grow rapidly over the next ten years leading to an increasing need for management professionals.

There is also an increasing demand for those professionals to hold higher level qualifications. Applicants for these roles are therefore at a considerable advantage with a postgraduate qualification and there is a strong emphasis within this programme on application of knowledge and development capabilities in business management or business information systems. [Learn more on our website.](#)



Course Summary

Level	Level 8
International Fees	\$27,000 Fee after scholarship: \$23,500
Duration	1 year full-time
Credits	120 credits
Campus	Auckland Central (Queen St)
Who can apply	International students, over 18 years of age
Next intake	February, April, July and October

Highlights

Choose your speciality & complete a professional research project

Interactive classes & practical courses

Career pathways as a Project Manager, Data Analyst, Marketing Manager, Information Systems Manager, or General Manager.

Entry Overview

Minimum academic entry requirements are:

- A Bachelor's degree (or equivalent qualification) in a related discipline, OR
- A combination of academic qualifications and relevant skills and knowledge acquired through work or professional experience that is deemed equivalent to the above.
- **International applicants** must demonstrate that they have equivalent academic qualifications and experience. [Click here](#) for your country's equivalent academic entry requirements.

If English is not your first language, you must provide:

- New Zealand University Entrance OR
- Overall Academic IELTS 6.5 with no individual band score lower than 6.0 (achieved in one test completed in the last two years), OR
- Acceptable alternative evidence of the required IELTS ([see here](#) for NZQA proficiency table and a list of recognised proficiency tests).

Postgraduate Diploma in Applied Management (Business Information Systems)



Management occupations are projected to grow rapidly over the next ten years leading to an increasing need for management professionals.

There is also an increasing demand for those professionals to hold higher level qualifications. Applicants for these roles are therefore at a considerable advantage with a postgraduate qualification. [Learn more on our website.](#)

Course Summary

Level	Level 8
International Fees	\$27,000 Fee after scholarship: \$23,500
Duration	1 year full time
Credits	120 credits
Campus	Auckland Central (Queen St)
Who can apply	International students, over 18 years of age
Next intake	February, April, July, and October

Highlights

Choose your speciality & complete a professional research project

Interactive classes & practical courses

This programme can lead to successful careers as an analyst in Business Intelligence and Information Systems. Also as a Project Manager, Technical/Solution Analyst, User Experience/ Front End Designer and Information Systems Researcher.

Entry Overview

Minimum academic entry requirements are:

- A Bachelor's degree (or equivalent qualification) in a related discipline, OR
- A combination of academic qualifications and relevant skills and knowledge acquired through work or professional experience that is deemed equivalent to the above.
- **International applicants** must demonstrate that they have equivalent academic qualifications and experience. [Click here](#) for your country's equivalent academic entry requirements.

If English is not your first language, you must provide:

- New Zealand University Entrance OR
- Overall Academic IELTS 6.5 with no individual band score lower than 6.0 (achieved in one test completed in the last two years), OR
- Acceptable alternative evidence of the required IELTS ([see here](#) for NZQA proficiency table and a list of recognised proficiency tests).

Master of Applied Management

(Business Management)

Successful completion of this advanced programme will enable you to confidently engage with research and its application across a range of disciplines within the applied management context.

Graduates of this qualification are critical thinkers, effective problem solvers, future-focused and apply specialised management and leadership knowledge and capabilities to new situations within the field of business management. [Learn more on our website.](#)



Course Summary

Level	Level 9
International Fees	\$40,500 Fee after scholarship: \$34,700
Duration	18 months full-time
Credits	180 credits
Campus	Auckland Central (Queen St)
Who can apply	International students, over 18 years of age
Next intake	February, April, July and October

Highlights

Choose your speciality & complete a thesis or professional research project

Interactive classes & practical courses

This programme can lead to a successful career as a Project Manager, Data Analyst, Marketing Manager, Information Systems Manager, or General Manager.

Entry Overview

Minimum entry requirements are:

- A Bachelor's degree (or equivalent qualification) in a related discipline with a grade average at Level 7/8 of B- or higher, OR
- A combination of academic qualifications and relevant skills and knowledge acquired through work or professional experience that is deemed equivalent to the above.
- International applicants must demonstrate that they have equivalent academic qualifications and experience. [Click here](#) for your country's equivalent academic entry requirements.

If English is not your first language, you must provide:

- New Zealand University Entrance OR
- Overall Academic IELTS 6.5 with no individual band score lower than 6.0 (achieved in one test completed in the last two years), OR
- Acceptable alternative evidence of the required IELTS ([see here](#) for NZQA proficiency table and a list of recognised proficiency tests).

Master of Applied Management

(Business Information Systems)



Successful completion of this advanced programme will enable you to confidently engage with research and its application across a range of disciplines within the business information systems context.

Graduates of this qualification are critical thinkers, effective problem solvers, future-focused and apply specialised management and leadership knowledge and capabilities to new situations. [Learn more on our website.](#)

Course Summary

Level	Level 9
International Fees	\$40,500 Fee after scholarship: \$34,700
Duration	18 months full-time
Credits	180 credits
Campus	Auckland Central (Queen St)
Who can apply	International students, over 18 years of age
Next intake	February, April, July, and October

Highlights

Choose your speciality & complete a thesis or professional research project

Interactive classes & practical courses

This programme can lead to successful careers as an analyst in Business Intelligence and Information Systems. Also as a Project Manager, Technical/Solution Analyst, User Experience/ Front End Designer and Information Systems Researcher.

Entry Overview

Minimum entry requirements are:

- A Bachelor's degree (or equivalent qualification) in a related discipline with a grade average at Level 7/8 of B- or higher, OR
- A combination of academic qualifications and relevant skills and knowledge acquired through work or professional experience that is deemed equivalent to the above.
- International applicants must demonstrate that they have equivalent academic qualifications and experience. [Click here](#) for your country's equivalent academic entry requirements.

If English is not your first language, you must provide:

- New Zealand University Entrance OR
- Overall Academic IELTS 6.5 with no individual band score lower than 6.0 (achieved in one test completed in the last two years), OR
- Acceptable alternative evidence of the required IELTS ([see here](#) for NZQA proficiency table and a list of recognised proficiency tests).

NZ Diploma in Construction

(Quantity Surveying)

Want to kickstart your career in quantity surveying? Gain real-world technical skills in budgeting and cost planning for construction projects in this hands-on learning programme at our Auckland International Campus on Queen St. This project-based programme is run in four blocks of study over two years. Each block lasts nine weeks. You need to dedicate about 35 hours per week to the programme.

New Zealand offers residency under a number of categories including for those who have completed their study in New Zealand. To learn more about your specific situation, please refer to the Immigration New Zealand website or engage with a licensed immigration adviser.

[Learn more on our website.](#)



Course Summary

Level	Level 6
International Fees	\$24,890 per year Fee after scholarship: \$19,890 per year
Duration	2 years
Credits	120 credits
Campus	Auckland Central (Queen St), Manukau
Who can apply	International students, over 18 years of age
Next intake	February, April, July, and October

Highlights

Learn to measure and estimate building costs, the latest technologies in construction and to communicate in a construction related context

Join the NZIQS as a free student member

Career pathways as Estimator, Consultant, Contract Administrator, Contract Manager and Junior Quantity Surveyor.

Entry Overview

- A minimum of 50 NCEA credits at Level 2, including:
 - 12 credits in Maths, and
 - a minimum of 12 Literacy credits at NCEA Level 1,
 - OR be able to demonstrate equivalent knowledge and skills.

[Click here](#) for equivalent academic entry requirements by country.

- If English is not your first language, you must provide:
 - New Zealand University Entrance OR
 - Overall Academic IELTS 6.0 with no individual band score lower than 5.5 (achieved in one test completed in the last two years), OR
 - Acceptable alternative evidence of the required IELTS ([see here](#) for NZQA proficiency table).



Bachelor of Construction (Quantity Surveying)

Course Summary

Level	Level 7
International Fees	\$24,890 per year Fee after scholarship: \$19,890 per year
Duration	3 years full-time or six years part-time or longer by further agreement
Credits	360 credits
Campus	Auckland Central (Queen St), Manukau
Who can apply	International students, over 18 years of age
Next intake	February, April, July and October

Highlights

Hands-on project based learning from industry experienced teaching staff

Learn the latest technologies and how to communicate in a construction related context

Career pathways as a Consultant, Estimator, Contract Administrator, Contract Manager and Quantity Surveyor.

Want to become an expert in construction project management? Now you can study part-time.

Gain the skills to contribute greatly to the booming building industry, at our Auckland Campus on Queen St. Meet the surging demand for construction professionals by learning technical, work-ready skills to price and manage construction projects. This degree broadens your skills in business and construction law and management. [Learn more on our website.](#)

Entry Overview

- If you are under 20, you will need to have NCEA Level 3 including 14 credits at Level 3 or above in three NZQA approved university entrance subjects, and meet literacy and numeracy requirements.
- If you are over 20, you need to show evidence of industry experience and/or alternative relevant qualifications.
- If you don't meet the academic entry criteria, you may still be given provisional entry to year one at the discretion of the Programme Leader.

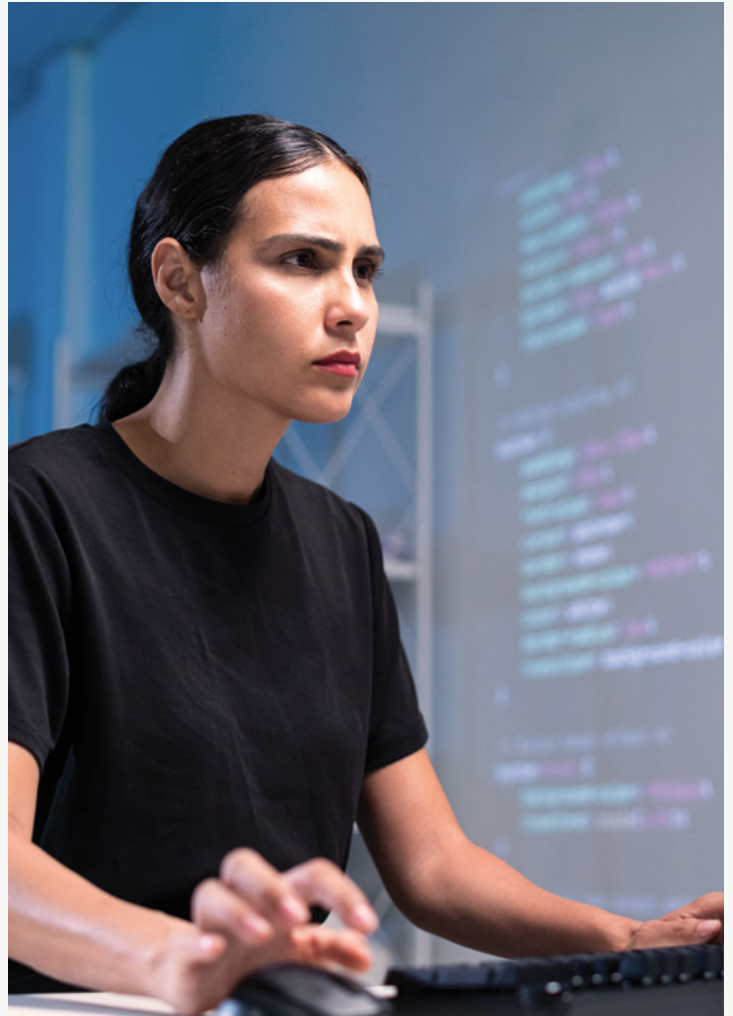
[Click here](#) for equivalent academic entry requirements by country.

For those over 20:

- You must supply evidence of industry experience and/or alternative relevant qualifications.
- Provisional entry is possible.
- If English is not your first language, you must provide:
 - New Zealand University Entrance OR
 - Overall Academic IELTS 6.0 with no individual band score lower than 5.5 (achieved in one test completed in the last two years), OR
 - Acceptable alternative evidence of the required IELTS ([see here](#) for NZQA proficiency table and [here](#) for list of recognised proficiency tests).
- We do not accept international learners under the age of 18 at the time of enrolment.

Postgraduate Diploma in AI Integrated IT Solutions

Artificial Intelligence (AI) is transforming how the world works – from healthcare and finance to logistics, education, and social innovation. In New Zealand, rapid digital transformation has created strong demand for professionals who can connect AI technologies with real business impact. [Learn more on our website.](#)



Course Summary

Level	Level 8
International Fees	\$27,000 Fee after scholarship: \$23,500
Duration	One year full-time
Credits	120 credits
Campus	Auckland Central (Queen St)
Who can apply	International students, over 18 years of age
Next intake	February, April, July and October

Highlights

Apply AI-integrated IT knowledge to analyse and address industry-specific problems.

Work on real-world AI projects guided by experienced academics and industry mentors. Be part of New Zealand's first postgraduate programme focused on AI-Integrated IT Solutions.

Career pathways as a AI Engineer, Data Scientist, Business Intelligence Analyst or Cybersecurity Specialist (AI-powered).

Entry Overview

Minimum entry requirements are:

- A Bachelor's degree in any discipline, or an equivalent qualification at Level 7 or above, or
- At least five years of relevant professional experience in IT, business, or a related domain (for applicants without a degree).

[Click here](#) for equivalent academic entry requirements by country.

English Language Requirements:

Applicants for whom English is not their first language must provide evidence of English language competence:

- IELTS Academic: Overall band score of 6.5, with no individual band less than 6.0, or
- An equivalent score in an NZQA-recognised English Proficiency Test ([see here](#) for NZQA proficiency table).



Master of AI Integrated IT Solutions

Artificial Intelligence is reshaping every profession – from business and healthcare to engineering, design, and social science. Organisations everywhere are searching for people who can connect intelligent technologies with real-world systems and processes. The Master of AI Integrated IT Solutions is New Zealand's first postgraduate programme that brings together Artificial Intelligence and Information Technology in one integrated qualification. [Learn more on our website.](#)

Course Summary

Level	Level 9
International Fees	\$40,500 Fee after scholarship: \$32,000
Duration	1.5 years full-time
Credits	180 credits
Campus	Auckland Central (Queen St)
Who can apply	International students, over 18 years of age
Next intake	February, April, July and October

Highlights

Work on real-world AI projects guided by experienced academics and industry mentors.

Be part of New Zealand's first postgraduate programme focused on AI-Integrated IT Solutions.

Career pathways as a AI Engineer, Data Scientist, Business Intelligence Analyst or Cybersecurity Specialist (AI-powered).

Entry Overview

Minimum entry requirements are:

- A Bachelor's degree in IT or a related discipline, or
- At least five years of relevant professional experience in IT, business, or a related domain (for applicants without a degree).

[Click here](#) for equivalent academic entry requirements by country.

English Language Requirements:

Applicants for whom English is not their first language must provide evidence of English language competence:

- IELTS Academic: Overall band score of 6.5, with no individual band less than 6.0, or
- An equivalent score in an NZQA-recognised English Proficiency Test ([see here](#) for NZQA proficiency table).

Success Stories



Brazilian student Isabelle Simonetto is enjoying the challenge of pursuing postgraduate studies alongside her work.

“Have as much dedication as you can. If you are trying to conciliate work and study life; my advice is to find a balance between both, and of course, have fun and enjoy your time in New Zealand.”

Isabelle came to New Zealand from Brazil on a Working Holiday Visa. She had always wanted to live and work overseas and chose New Zealand because she has family living here.

She enrolled in the Postgraduate Certificate in Applied Management with Future Skills. She continues to work in her customer support role.

Isabelle says she is enjoying her time at Future Skills. She says one highlight is the fact that her lecturers are always available to help her when needed.

She also loves the location of the Future Skills International campus in the centre of Auckland city and close to her workplace.

Isabelle says juggling work and study can be challenging but she believes she's doing a good job so far.

“I'm dividing my weekly hours into specific times to cover my work hours and study hours.”

Her advice to other students juggling multiple responsibilities is to do the same.

“Have as much dedication as you can. If you are trying to conciliate work and study life; my advice is to find a balance between both, and of course, have fun and enjoy your time in New Zealand.”

After she graduates, Isabella hopes to find work related to business analysis in a corporate environment.

Success Stories



Master of Applied Management student Tarun Chauhan has been impressed with the quality and availability of staff here at Future Skills.

“Teaching staff make sure the concept is understood well so the students do well.”

Tarun is of Indian nationality but was born and raised in Kuwait, where he spent time working as an Inflight Purser, or Cabin Manager.

Tarun says he made the decision to come to New Zealand to give his daughters a better life.

He studied International Tourism at a postgraduate level at a local university before enrolling with Future Skills.

He says his Future Skills experience has differed from his university experience in some positive ways. Our small class sizes mean students get individualised support and attention from their lecturers.

Tarun says lecturers and support staff at Future Skills have been very helpful to him.

“Teaching staff make sure the concept is understood well so the students do well,” he says.

He’s had a smooth journey so far but knows that if he faces any challenges, staff will be there to help him overcome them.

His advice to other students is to talk to their lecturers or support staff if they have any doubts or concerns.

“I’m sure a solution will come out – two minds are better than one.”

After Tarun graduates, he hopes to get back into the aviation field.

Success Stories



A master's student with a diverse professional background has secured a role in the property management sector in New Zealand.

“Rest days were few and far between as I balanced work at the hotel, my internship, and peer tutoring.”

Mary Grace Estrella grew up in the Philippines helping her father and grandmother with various family businesses, including a foreign exchange, a grocery mart, a small restaurant, and an ice plant.

“I've been helping with the family business since my early teens,” says Mary.

She completed a Bachelor of Science majoring in Medical Technology before building a career across contact centres, telecommunications, finance, network engineering, shipping, and real estate. She later worked as a virtual assistant with clients around the world.

Across these roles, she gained experience in administration, marketing, and data management, with a strong focus on improving processes, and was part of teams that drove process excellence across these areas. On top of that, she is a certified yoga teacher for both adults and children.

Mary says postgraduate study was always one of her goals. With the global economy constantly shifting, she saw a master's degree as a strategic investment that could give her both stability and practical skills.

“When is the best time for me to take this step forward? That was always on my mind,” she says.

Her relatives encouraged her to gain overseas experience, and suggested New Zealand would be a good fit because of its lifestyle and opportunities. After weighing up the pros and cons of leaving the Philippines, she began the visa and enrolment process.

The legal requirements turned out to be straightforward, and by December 2023 she was planning her move. She arrived in New Zealand in April 2024 and is now in the final block of her master's degree.

Since starting her studies, Mary has made the most of every opportunity. She has been involved in numerous undertakings related to her field of study, both inside and outside the classroom.

She has worked part-time at the Four Points by Sheraton hotel, earned an NZQA Certificate in Barista and Service Skills and a WSET Level 1 Award in Wines, and supported other students as a Peer Tutor. She also spent time as an Employability Co-ordinator at AIC.

Success Stories



A Sri Lankan student with an impressive background in marketing is looking forward to applying her expertise and expanding her knowledge during her internship.

“The institution’s core values, developing the whole person, fostering lifelong learning, and contributing to the community deeply align with my own beliefs.”

Ruvangi Wijekulasuriya recently secured the position of Digital Marketing Intern at the premium New Zealand honey company Bee Positive. The internship is centred on social media marketing and brand engagement.

“I’ll focus on optimising website content, enhancing search engine rankings, and developing strategies to boost online visibility. This role allows me to apply my previous experience while gaining valuable insights into the New Zealand business landscape,” says Ruvangi.

Ruvangi has more than nine years of experience in marketing and market intelligence. She progressed from Market Analyst to Manager Projects at Brandix, an apparel company operating in nine countries with over 60,000 employees.

“At Brandix, I managed high-level projects and led the research team to drive business growth,” she says.

Ruvangi came to New Zealand to gain international exposure. She says one of the most rewarding aspects of studying at Future Skills has been the opportunity to engage with a diverse community of students and lecturers from a variety of cultural backgrounds.

“Interacting with individuals from different countries has not only broadened my perspectives but also enriched my learning journey, fostering a deeper appreciation for global viewpoints,” she says.

She chose Future Skills because it’s renowned for delivering high-quality, industry-relevant education and offering NZQA-recognised qualifications.

“The institution’s core values, developing the whole person, fostering lifelong learning, and contributing to the community deeply align with my own beliefs,” says Ruvangi.

She has previously gained a Bachelor of Business (Marketing & Management) from Edith Cowan University, Australia, and a Postgraduate Diploma in Marketing from The Chartered Institute of Marketing, UK.

Outside of work and study, Ruvangi is a passionate squash player, who has represented Sri Lanka at the national level.

After graduation, she aims to pursue a career in digital marketing and business development in New Zealand.



Studying in New Zealand

New Zealand is the 3rd
safest country in the world¹

Auckland has the 5th top
living quality in the world²

Each year, thousands of students come to beautiful New Zealand for a high quality education in a safe, multicultural environment. With a population of 5.3 million people, and is one of the least crowded countries in the world. Here, you can enjoy your studies and experience a fun, friendly and easy going lifestyle.

Our country is known for its stunning natural scenery, including beautiful mountains, lakes, beaches and forests.

New Zealanders – often referred to as Kiwi – are down-to-earth and friendly. Our lifestyle is relaxed, and many of us have a passion for the outdoors.

With a history of Māori, European, Pacific Island and Asian cultures, New Zealand has a multicultural population.

More than threequarters of New Zealanders live in the North Island.

Auckland is the biggest city, while the other main cities include Hamilton, Wellington, Christchurch and Dunedin. There are many things to experience here, including unique nature and wildlife, adventure tourism, arts and culture, sporting events and thriving cities.

Go to [tourismnewzealand.com](https://www.tourismnewzealand.com) for more.

¹Global Peace Index, 2025

²Mercer Quality of Living Survey 2024

Auckland (known as ‘the city of sails’) is set on a beautiful gulf, filled with many small islands and was established in 1841 on land offered by the Ngāti Whātua tribe.

It is a major gateway to New Zealand, and a prosperous port. Auckland is our largest city and a third of New Zealand’s population live here. It’s a fast-growing business hub and where all the action happens. Immerse yourself in vibrant cafes, nightlife, shopping, museums, galleries and parks. You will love Auckland’s warm climate, stunning scenery and multicultural communities. It is the perfect blend of sophisticated city living and outdoor beauty for you to enjoy.



Tāmaki Makaurau, the Māori name for Auckland, means Tāmaki – desired by many. This name refers to the abundance of natural resources, strategic vantage points, portage routes, and kai (food), which first attracted Māori and then other settlers

Māori culture

Māori are the tangata whenua (indigenous people) of Aotearoa New Zealand. Māori culture, including its customs, traditions, and language, is an important part of life in Aotearoa.

The Māori name for New Zealand is Aotearoa, which means Land of the Long White Cloud. Here are some phrases and words you might hear:

Kia ora!

Kia ora can mean hello, good morning, good afternoon and thank you.

Ako

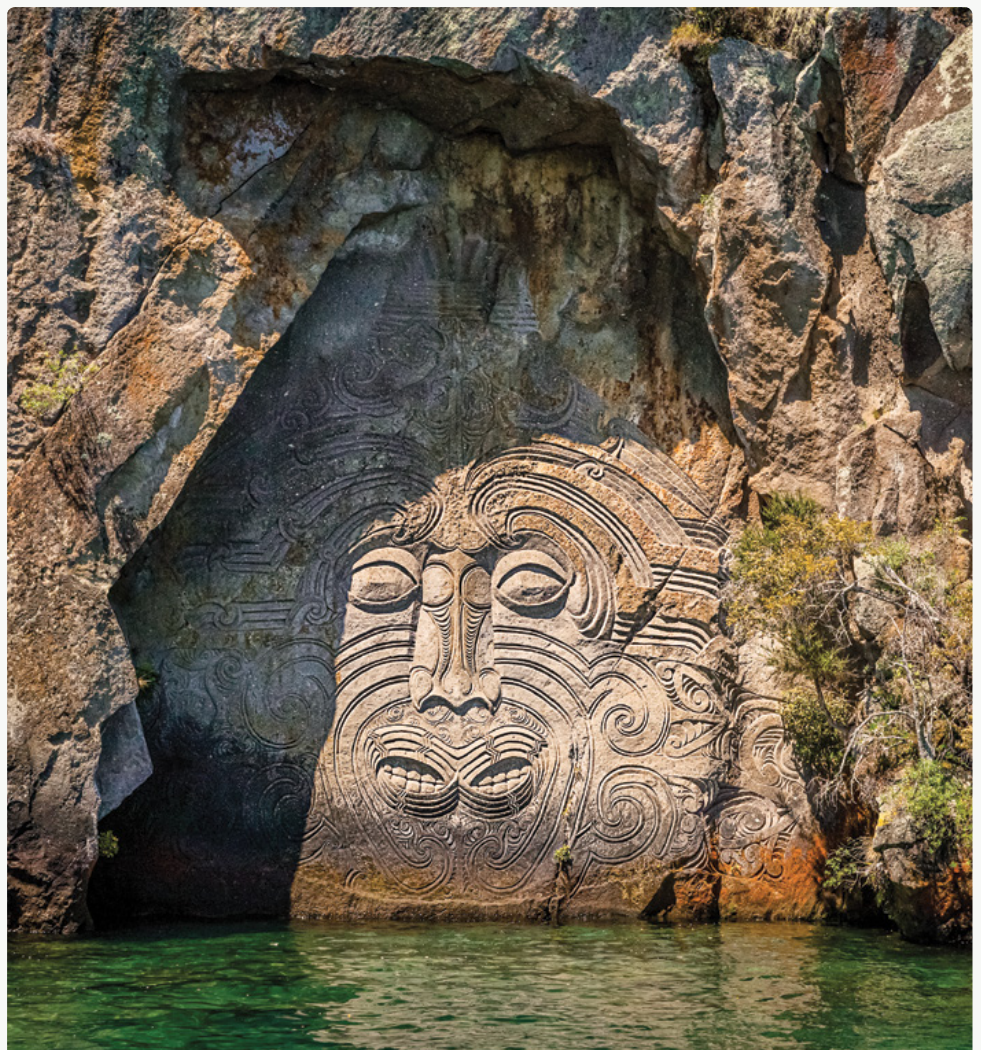
To learn, study, instruct, teach, advise.

Ākonga

Student, pupil, learner, protégé.

Kaiako

Teacher, instructor.



Campuses

AUCKLAND INTERNATIONAL CAMPUS

 **FutureSkills**

 **OTAGO
POLYTECHNIC**
Te Kura Matatini ki Otago

Auckland International

Level 1, 350 Queen Street, Auckland

All international students will study at our Auckland International Campus (AIC). At AIC, we empower our people to grow personally and professionally, guided by integrity, connection, and a commitment to excellence.

AIC is a partnership between Future Skills and Otago Polytechnic (OP), established in 2012 to deliver high-quality tertiary education to international students.

The Auckland Campus is located in a modern building on the city's main shopping and business street, Queen Street.

We have excellent facilities, including computer labs, free internet and a student lounge where you can hang out, play games, chat with other students and take your study breaks. Study in an environment that celebrates diversity with programmes delivered by leading academic and business experts.





Manukau

Level 4, Westfield Manukau

This modern site sits in the middle of all the action of Westfield Manukau City Shopping Centre.

Future Skills Academy was founded in Manukau in 2000. It has held strong ties with the South Auckland community since inception.



Royal Oak

665 Manukau Road, Royal Oak, Auckland

This modern building sits in a central location with good transport links.

Royal Oak campus features a small and family orientated environment. It's right across the road from Cornwall Park, a top Auckland attraction.



Takapuna

51 Hurstmere Road, Takapuna, Auckland

Our modern Takapuna campus has a great feel and easy access to public transport, local amenities, and student accommodation. Just a short walk from the beach, it's the perfect place to study, unwind, and make the most of Auckland's coastline.

Student Services

Starting as a new student is both exciting and challenging. From your first enquiry to your first day on campus, we are here to help.

Our student services provide advice, resources, and support to help you succeed in your studies and balance life outside the classroom. Whether you need guidance with coursework, personal challenges, or work/life balance, we're here for you.

Join our Student Focus Group to share your voice and help shape life on campus.



Student wellness

If you have serious concerns about someone's immediate safety, phone 111 or take them to the Accident and Emergency Department (A&E) at your nearest hospital. Call your nearest hospital, your district health board's psychiatric emergency service or mental health crisis assessment team. Remain with them and help them to stay safe until support arrives.

For urgent help in a mental health crisis contact the Community Mental Health Urgent Response team: Central Auckland 0800 800 717, South Auckland 09 261 3700.

We want students to be happy and to know where they can turn for help. Our staff are always available for a chat but if we are unable to provide the help you need, we will refer you to the right service. We encourage you to call the following services if you need extra support:

Help lines

Need to talk? 1737 – free call or text

- The Depression Helpline
0800 111 757
- Healthline 0800 611 116
- Lifeline 0800 543 354
- Samaritans 0800 726 666
- Youthline 0800 376 633
- Alcohol Drug Helpline
0800 787 797

Go [here](#) for a comprehensive list of help lines and mental health services.

Pastoral Care

Auckland International Campus is a safe and supportive environment where every student is valued. Our Student Success team is here to help with any issues affecting your studies—confidentially and with care. We support your emotional wellbeing and aim to create a secure campus where barriers to learning are removed.

You'll meet the Student Success team at orientation, and you're always welcome to talk with them or your lecturer. For more information email int.studentsuccess@futureskills.co.nz or phone 0800 888 001.

Campus Services

We have a campus kitchen with the following:

- Hot water
- Filtered water
- Toasters
- Microwaves
- Fridge

Employability

Our Employability Team can help you to get work-ready and find placement and employment opportunities. They also organise workshops and networking and industry events on and off campus.

Academic Support Services

Future Skills offers Academic Support services. These practices ensure all students have an equal opportunity for success by addressing any barriers to learning.

Some of the services we offer are:

- Academic writing and referencing support
- English language assistance
- Personalised study plans
- One-on-one sessions with peer tutors

As your success is crucial, we are constantly striving to see you supported academically by your lecturer and peers. Group academic workshops allow you to learn about various academic requirements such as paraphrasing, assessment requirements and APA referencing.

If you need help with using the digital software and platforms utilised in the classroom, please reach out to the Student Success Team and someone can assist you.

Moodle

Moodle is your go-to online learning tool to make studying a lot easier. You can gain access to your programme material through Moodle anywhere you have a computer and an internet connection. Students can reach Moodle easily through the log-in button at www.futureskills.co.nz

Student Hub

Our learners have their own online hub which ensures students can find information with ease. You can access it through the log-in button at www.futureskills.co.nz

Quick access to frequently used information and documents

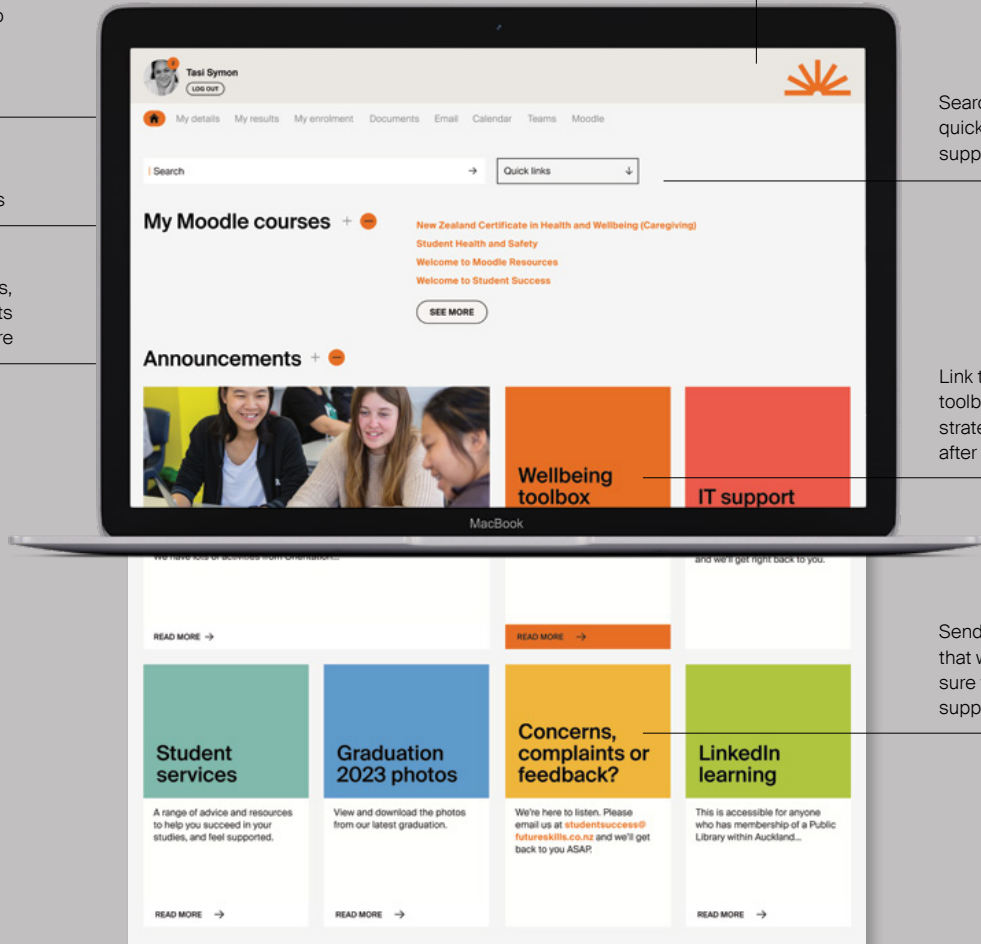
Easy access to Moodle courses

Announcements, support & events are updated here

Search and access quick links to support information

Link to the Wellbeing toolbox for useful strategies to look after yourself

Send us feedback so that we can make sure you are supported





FutureSkillsTM

EXCELLENCE
25
YEARS GOING
STRONG



0800 550 410
international@futureskills.co.nz
www.futureskills.co.nz

→ Facebook → LinkedIn
→ Instagram → Youtube